

[www.indiratrade.com](http://www.indiratrade.com)



MONDAY

# CURRENCY COMMODITIES

**WEEKLY REPORT  
19 NOV TO 23 NOV 2018**

**EDGE**



**INDIRA SECURITIES PVT. LTD.**



## WEEKLY INDICES CHANGES

INDEX	CLOSE	PREV. CLOSE	Change (%)
SENSEX	35158.55	35011.65	0.42%
NIFTY	10585.2	10553	0.31%
DOW	25989.3	25270.8	2.84%
NASDAQ	7406.9	7356.99	0.68%
FTSE	7105.34	7094.12	0.16%
NIKKEI	22283	22243	0.18%
DAX	11529.2	11519	0.09%
CAC	5106.75	5102.13	0.09%

## Market Round Up:

- U.S. Stocks Gain on Energy Surge; Dollar Slips: Markets Wrap: - U.S. equities recovered from an early swoon as energy and utility gains offset a plunge in department-store and technology stocks. Treasuries climbed and the dollar retreated.
- Forex - Dollar Falls as Fed's Clarida Says Interest Rates Near Neutral: - The dollar fell on Friday after Richard Clarida, vice chairman of the Federal Reserve, said that interest rates were near neutral, but indicated that a December rate hike is still possible.
- The dollar was lower against the safe-haven Japanese yen, with USD/JPY falling 0.76% to 112.78. In times of uncertainty, investors tend to invest in the Japanese yen, which is considered a safe asset during periods of risk aversion.
- Elsewhere, GBP/USD rallied 0.63% to 1.2852 despite growing uncertainty on whether Prime Minister Theresa May would be able to pass a Brexit deal in parliament as she faces a potential leadership challenge.
- The Fed is expected to increase rates in December and comments from Fed Chairman Jerome Powell have increased expectations that the central bank will gradually increase rates in 2019.

## RBI REFRANCE RATE

INDEX	CLOSE	PREV. CLOSE
USDINR	72.7347	72.8798
EURINR	82.5195	83.2292
JPYINR	63.8400	64.4700
GBPINR	94.8737	94.7530

## FII FIGURES

DATE	FII FIGURES IN CRORE
19/11	832
20/11	-495
21/11	277
22/11	2043
23/11	845
NET	+3502

## DII FIGURES

DATE	DII FIGURES IN CRORE
19/11	-1073
20/11	336
21/11	-272
22/11	-165
23/11	-372
NET	-1542



## DOLLAR INDEX CHART



1. **RSI:** 62.20
2. **ADX:** Indicating Sideways signal
3. **Stochastic Oscillator:** indicating Sideways signal
4. **ATR:** 1.19
5. **Moving averages:** Pair is trading above 50 and 100 Day simple moving averages..

## USDINR TECHNICAL CHART (INDIAN RUPEE)



- 1) **RSI:** 79.39
- 2) **ADX:** Indicating positive signal
- 3) **Stochastic Oscillator:** indicating positive signal
- 4) **ATR:** 0.8760
- 5) **Moving averages :** Pair is trading above 50 and 100 Day simple moving averages..



## DOMESTIC CURRENCY

Domestic	S2	S1	PIVOT	R1	R2
USDINR	71.98	72.37	72.71	73.11	73.45
EURINR	93.57	94.29	95.35	96.07	97.13
GBPINR	63.73	64.02	64.49	64.78	65.25
JPYINR	71.98	72.37	72.71	73.11	73.45

## GLOBAL CURRENCY

Global	S2	S1	PIVOT	R1	R2
DOLLAR INDEX	93.26	94.19	94.78	95.71	96.3
EURUSD	111.86	112.55	112.99	113.68	114.12
GBPUSD	1.29	1.3	1.31	1.31	1.33
USDJPY	1.15	1.15	1.17	1.18	1.19

## CURRENCY PERFORMANCE

CURRENCY	CLOSE PRICE	DAY	WEEK	MONTHLY	YEARLY
EURO	1.14125	0.76%	0.69%	-0.75%	-3.23%
POUND	1.28164	0.36%	-1.21%	-2.26%	-2.99%
AUSTRALIAN DOLLAR	0.73352	0.81%	1.54%	3.20%	-3.04%
NEWZEALAND DOLLAR	0.68721	0.68%	2.01%	4.95%	0.82%
YEN	112.82	-0.71%	-0.86%	0.16%	0.66%
YUAN	6.9071	-0.27%	-0.56%	-0.31%	4.08%
SWISS FRANC	0.9993	-0.75%	-0.60%	0.41%	1.10%
CANADIAN DOLLAR	1.31417	-0.25%	-0.51%	0.97%	2.98%
MEXICAN PESO	20.144	-0.40%	0.22%	6.75%	6.52%
INDIAN RUPEE	72.125	-0.25%	-0.34%	-1.82%	10.94%
BRAZILIAN REAL	3.7393	-1.18%	-0.56%	0.40%	14.80%
RUSSIAN RUBBLE	65.973	0.17%	-2.86%	0.71%	11.66%
DOLLAR INDEX	96.45	-0.49%	-0.43%	0.92%	2.67%
KORREAN WON	1120.26	-0.59%	-1.03%	-0.64%	2.46%
SOUTH AFRICAN RAND	13.9825	-1.59%	-2.29%	-1.81%	0.08%
SINGAPORE DOLLAR	1.37187	-0.22%	-0.44%	-0.44%	1.23%
HONGKONG DOLLAR	7.82838	-0.03%	-0.05%	-0.14%	0.23%

# COMMODITIES

## FUNDAMENTAL OF COMMODITIES

### MAJOR COMMODITIES

#### MCX ENERGY WEEKLY

Commodity	S2	S1	Pivot	R1	R2
Crude oil- Sep	4060.7	4211.3	4447.7	4598.3	4834.7
Natural Gas-Sep	230.1	251.3	263.8	285.0	297.5

#### MCX BASE METAL WEEKLY

Commodity	S2	S1	Pivot	R1	R2
Copper-Nov	415.4	423.3	437.7	445.6	460.0
Zinc- Sep	176.5	180.9	185.1	189.4	193.6
Lead- Sep	135.4	138.9	142.4	146.0	149.5
Nickel- Sep	795.8	812.7	840.8	857.7	885.8

#### PRECIOUS METAL WEEKLY

Commodity	S2	S1	Pivot	R1	R2
Gold-Oct	30344.0	30680.0	31278.0	31614.0	32212.0
Silver-Dec	35398.7	36139.3	37429.7	38170.3	39460.7

International Commodity	S2	S1	Pivot	R1	R2	CMP	PREV CLOSE
Gold COMEX	-\$420.04	\$394.48	\$816.24	\$1,630.76	\$2,052.52	\$1,215.00	\$1,209.00
SILVER COMEX	-961.85	-473.85	502.07	990.07	1965.99	14.26	14.14
NYMEX CRUDE	56.32	58.25	61.2	63.13	66.08	56.68	60.19
BRENT CRUDE	66	67.82	70.97	72.79	75.94	66.69	69.64

#### Updates:

- Oil prices extend gains to a third day, but look to suffer a sixth weekly loss:
  - Both U.S. and global crude benchmarks extended their gains into a third session on Friday, but the move won't be enough to salvage the brutal weekly losses that helped drive prices to their lows of the year.
- Natural Gas Price Fundamental Daily Forecast – Large Build, return to Normal Temps Could Drive Prices Below \$4.00: - The price action this week brings to mind several factors. You can have the perfect storm of fundamentals, but you still have to have position management to make money. The charts are zeroing in on \$4.082 to \$3.873 as the key area to watch.
- Gold Prices Surge on Safe Haven Demand, Weaker Dollar: - Gold prices surged on Friday as American



# COMMODITIES

## MAJOR COMMODITIES

Commodity Major	Price	Day	Weekly	Monthly	Yearly
<b>Crude Oil</b>	56.8249	0.66%	-5.59%	-18.53%	0.49%
<b>Brent</b>	66.9868	0.59%	-4.55%	-16.32%	6.80%
<b>Natural gas</b>	4.3889	8.72%	18.01%	32.20%	41.71%
<b>Gold</b>	1221.05	0.67%	0.98%	-0.10%	-5.66%
<b>Silver</b>	14.3831	0.70%	1.61%	-1.55%	-16.89%
<b>Platinum</b>	846.4	0.37%	0.68%	2.53%	-8.36%
<b>Palladium</b>	1177.3	1.78%	5.46%	10.13%	18.53%
<b>Copper</b>	2.7998	1.85%	4.22%	1.19%	-8.58%
<b>Lead</b>	1912.25	0.00%	-3.68%	-6.79%	-21.11%
<b>Aluminum</b>	1940	0.57%	-2.51%	-4.62%	-7.79%
<b>Tin</b>	19350	-0.21%	0.13%	0.78%	-0.64%
<b>Zinc</b>	2606	1.16%	3.31%	0.00%	-18.05%



## MCX GOLD CHART



Commodity	S2	S1	Pivot	R1	R2
Gold	30344.0	30680.0	31278.0	31614.0	32212.0

GOLD TECHNICAL INDICATOR	
RSI(14)	BUY
STOCH(9,6)	SELL
STOCHRSI(14)	SELL
MACD(12,26)	BUY
ADX(14)	SELL
Williams %R	NETURAL
CCI(14)	BUY
Highs/Lows(14)	BUY
Ultimate Oscillator	SELL
ROC	BUY
BUY	4
SELL	4
NEUTRAL	1
SUMMARY	NETURAL

## GOLD INTERNATIONAL CHART



Commodity	S2	S1	Pivot	R1	R2
Gold	-\$420.0	\$394.5	\$816.2	\$1,630.8	\$2,052.5

GOLD INTERNATIONAL TECHNICAL INDICATOR	
RSI(14)	SELL
STOCH(9,6)	BUY
STOCHRSI(14)	SELL
MACD(12,26)	BUY
ADX(14)	BUY
Williams %R	BUY
CCI(14)	BUY
Highs/Lows(14)	BUY
Ultimate Oscillator	BUY
ROC	BUY
BUY	7
SELL	2
NEUTRAL	0
SUMMARY	<b>STRONG BULLISH</b>



## MCX SILVER CHART



Commodity	S2	S1	Pivot	R1	R2
Silver	35398.7	36139.3	37429.7	38170.3	39460.7

### SILVER TECHNICAL INDICATOR

RSI(14)	SELL
STOCH(9,6)	SELL
STOCHRSI(14)	SELL
MACD(12,26)	SELL
ADX(14)	SELL
Williams %R	NEUTRAL
CCI(14)	SELL
Highs/Lows(14)	BUY
Ultimate Oscillator	BUY
ROC	BUY
BUY	2
SELL	6
NEUTRAL	1
<b>SUMMARY</b>	<b>STRONG BEARISH</b>

## SILVER INTERNATIONAL CHART



Commodity	S2	S1	Pivot	R1	R2
Silver	-\$961.9	-\$473.9	\$502.1	\$990.1	\$1,966.0

### SILVER INTERNATIONAL TECHNICAL INDICATOR

RSI(14)	SELL
STOCH(9,6)	SELL
STOCHRSI(14)	SELL
MACD(12,26)	BUY
ADX(14)	SELL
Williams %R	SELL
CCI(14)	SELL
Highs/Lows(14)	BUY
Ultimate Oscillator	SELL
ROC	SELL
BUY	2
SELL	8
NEUTRAL	0
<b>SUMMARY</b>	<b>STRONG BEARISH</b>





## MCX COPPER CHART



Commodity	S2	S1	Pivot	R1	R2
Copper	415.4	423.3	437.7	445.6	460.0

### COPPER TECHNICAL INDICATOR

RSI(14)	SELL
STOCH(9,6)	SELL
STOCHRSI(14)	BUY
MACD(12,26)	BUY
ADX(14)	SELL
Williams %R	NETURAL
CCI(14)	SELL
Highs/Lows(14)	BUY
Ultimate Oscillator	BUY
ROC	BUY
BUY	4
SELL	4
NEUTRAL	1
SUMMARY	MILD BEARISH

## COPPER INTERNATIONAL CHART



Commodity	S2	S1	Pivot	R1	R2
Copper	-\$183.8	-\$90.5	\$95.9	\$189.1	\$375.6

### COPPER INTERNATIONAL TECHNICAL INDICATOR

RSI(14)	SELL
STOCH(9,6)	SELL
STOCHRSI(14)	BUY
MACD(12,26)	BUY
ADX(14)	BUY
Williams %R	SELL
CCI(14)	SELL
Highs/Lows(14)	BUY
Ultimate Oscillator	SELL
ROC	BUY
BUY	4
SELL	5
NEUTRAL	0
SUMMARY	MILD BEARISH



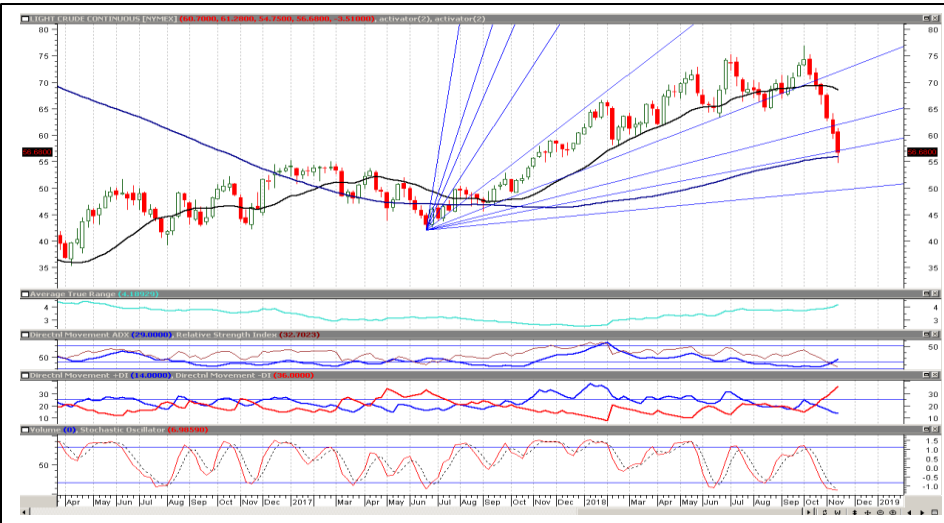
## MCX CRUDE CHART



Commodity	S2	S1	Pivot	R1	R2
Crude oil	4060.7	4211.3	4447.7	4598.3	4834.7

BRENT CRUDE OIL TECHNICAL INDICATOR	
RSI(14)	SELL
STOCH(9,6)	SELL
STOCHRSI(14)	SELL
MACD(12,26)	SELL
ADX(14)	SELL
Williams %R	SELL
CCI(14)	SELL
Highs/Lows(14)	BUY
Ultimate Oscillator	SELL
ROC	SELL
BUY	1
SELL	9
NEUTRAL	0
<b>SUMMARY</b>	<b>STRONG BEARISH</b>

## NYMEX CRUDE CHART



Commodity	S2	S1	Pivot	R1	R2
Crude oil	\$56.3	\$58.3	\$61.2	\$63.1	\$66.1

CRUDE.OILNYM TECHNICAL INDICATOR	
RSI(14)	SELL
STOCH(9,6)	SELL
STOCHRSI(14)	SELL
MACD(12,26)	SELL
ADX(14)	SELL
Williams %R	SELL
CCI(14)	SELL
Highs/Lows(14)	BUY
Ultimate Oscillator	SELL
ROC	SELL
BUY	1
SELL	9
NEUTRAL	0
<b>SUMMARY</b>	<b>STRONG BEARISH</b>



## MCX NATURAL GAS



Commodity	S2	S1	Pivot	R1	R2
Natural Gas	230.1	251.3	263.8	285.0	297.5

### NATURALGAS TECHNICAL INDICATOR

RSI(14)	BUY
STOCH(9,6)	BUY
STOCHRSI(14)	BUY
MACD(12,26)	BUY
ADX(14)	BUY
Williams %R	NETURAL
CCI(14)	BUY
Highs/Lows(14)	BUY
Ultimate Oscillator	BUY
ROC	BUY
BUY	8
SELL	0
NEUTRAL	1
SUMMARY	<b>STRONG BULLISH</b>

## NATURAL GAS INTERNATIONAL



Commodity	S2	S1	Pivot	R1	R2
Natural Gas	\$3.3	\$3.5	\$3.7	\$3.9	\$4.1

### NATURAL GAS INTER. TECHNICAL INDICATOR

RSI(14)	BUY
STOCH(9,6)	SELL
STOCHRSI(14)	BUY
MACD(12,26)	BUY
ADX(14)	SELL
Williams %R	NETURAL
CCI(14)	BUY
Highs/Lows(14)	BUY
Ultimate Oscillator	SELL
ROC	BUY
BUY	5
SELL	3
NEUTRAL	1
SUMMARY	<b>MILD BULLISH</b>





204 Amardarshan Building 3rd floor Saket Nagar , Indore-452018

**Call:** 0731-4797170-173 **Mob:** +91-9303172345 / **Toll Free:** 18001030059 / **SMS:** <INDIRA> to 56070

## DISCLAIMER

This report is for private circulation within the Indira Group. This report is strictly confidential and for information of the selected recipient only and may not be altered in any way, transmitted to, copied or distributed, in part or in whole, to any other person or to the media or reproduced in any form. This report should not be construed as an offer or solicitation to buy or sell any securities or any interest in securities. It does not constitute a personal recommendation or take into account the particular investment objectives, financial situations, or any such factor. The information, opinions, estimates and forecasts contained here have been obtained from, or are based upon, sources we believe to be reliable, but no representation of warranty, express or implied, is made by us to their accuracy or completeness. Opinions expressed are our current opinions as of our current opinions as of the data appearing on this material only and are subject to change without notice.